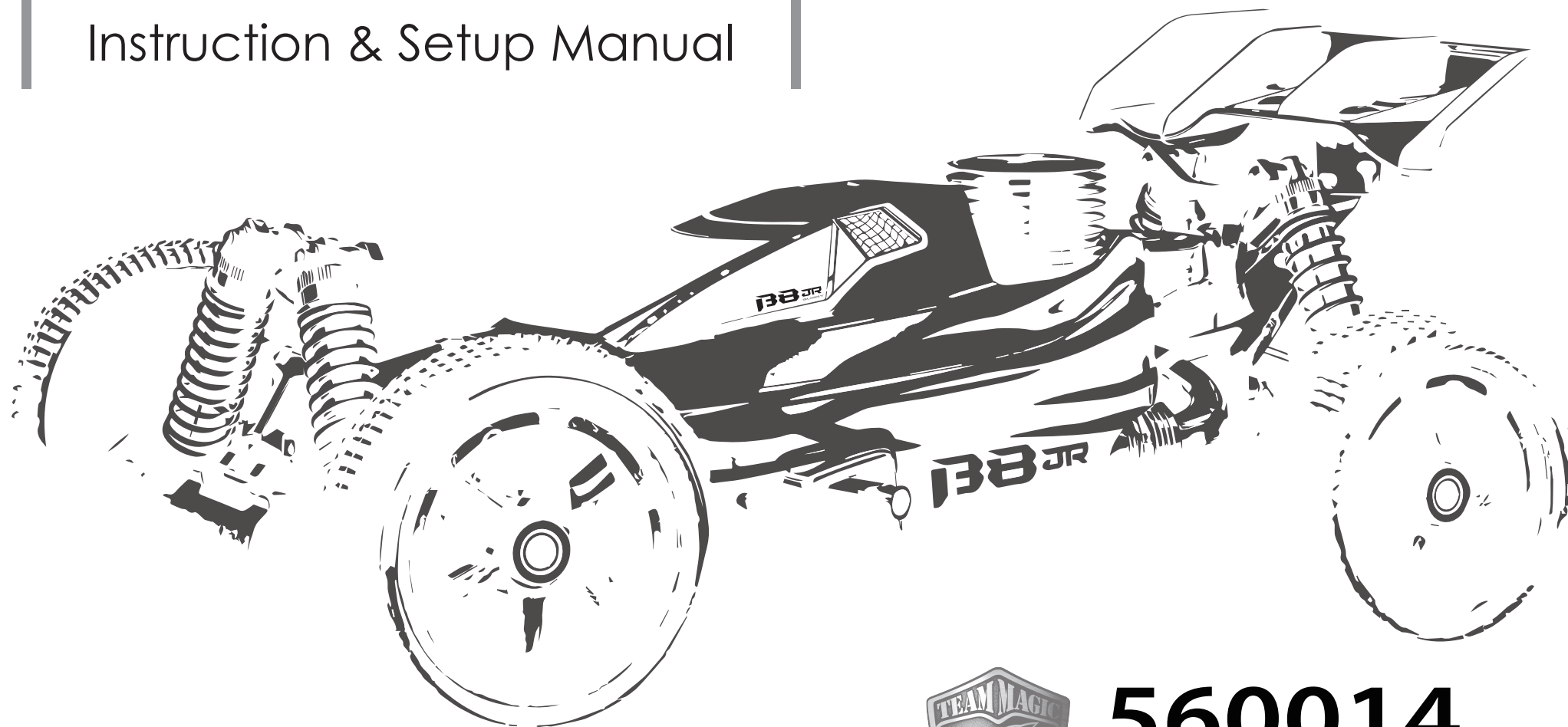


BB JR
BUGGY

Instruction & Setup Manual



560014
1/8 Gas Buggy RTR



Thank you for choosing the Team Magic B8JR. The B8JR includes a large selection of the important specialty parts compared to the previous versions. Before you start building your new B8JR, we suggest you read through the instruction manual first. Be sure to check all assembly and performance tips before you start. We hope you enjoy the building processes.

General Building Tips:

- ▶ Read the instruction manual before building.
- ▶ Clear a work area and try to work on a light color towel to avoid missing dropped parts.
- ▶ Don't over-tighten fasteners. Many assembly problems are caused by over-tightening screws or nuts. Don't use too large a grip. Please go slowly and feel the resistance build. Just snug it up.
- ▶ When it doesn't fit, please double check. If an assembly is not going together correctly, then either there really is a bad fit (e.g. a part is damaged or defective) or a mistake in assembly. Always re-read the instructions when there are any problems. If you cannot figure out what's wrong, always ask dealer, distributor or Team Magic. Don't use force beyond what the instructions call for.
- ▶ Using the right tools makes assembly much easier. The instructions below finely indicate you what tools to get to make things easier. We don't want to scare you by saying that all these tools are required, but you will have a easier time if you have them. Borrow them from a friend to check if necessary.
- ▶ The assembly is arranged so that you will open the bag and finish that bag before you go on to the next bag. Sometimes, you will have parts remaining at the end of a bag. These will become part of the following bags.

A Good Dealer Is Extremely Important!!

A good hobby dealer can help you with most assembly problems you might encounter. This is the main reason why you should buy your kits from a good dealer rather than from the cheapest dealer. Bring your problematic parts to the dealer and, most likely, you'll walk away soon thereafter with the problem solved. If you think that you really don't have the mechanical skills to complete the assembly, you may pay your dealer to finish the job for you.

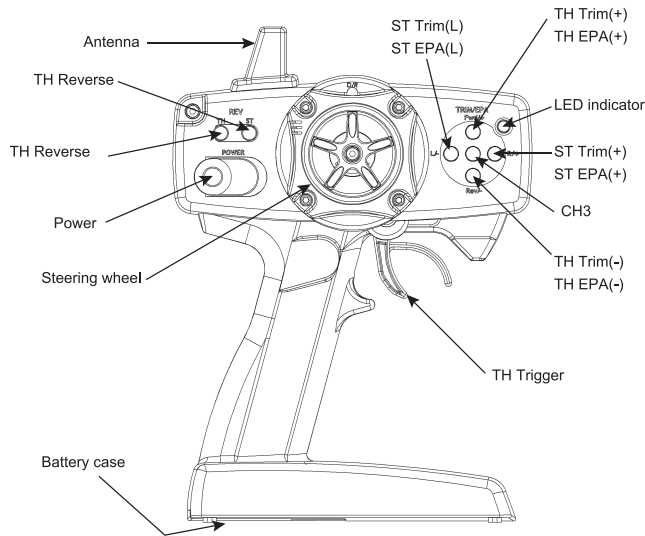


Thank you for purchasing the B8JR. To drive the car, you will need to check the following procedures.

Team Magic Model

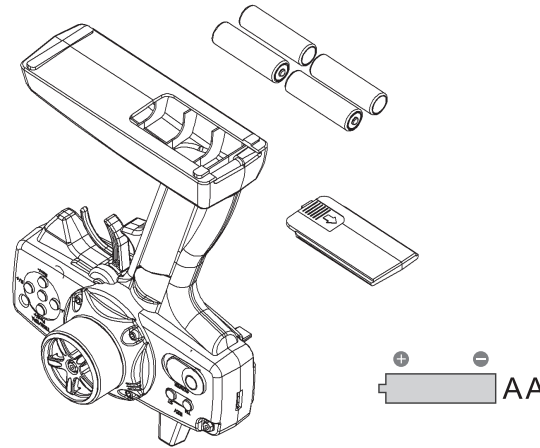


1 Transmitter Function



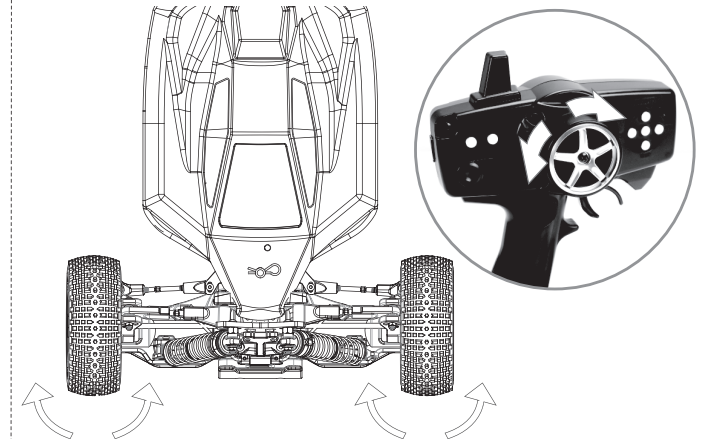
2 Operating Procedure

01 Install 4pcs AA batteries to the H.A.R.D transmitter.



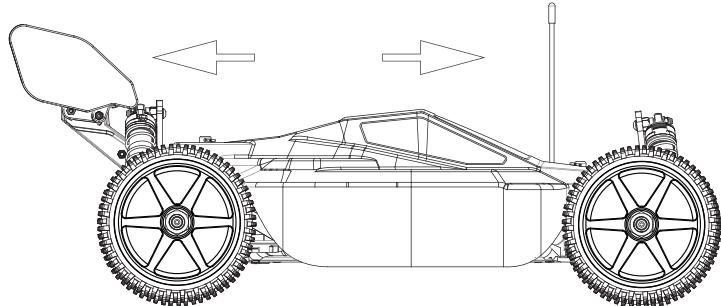
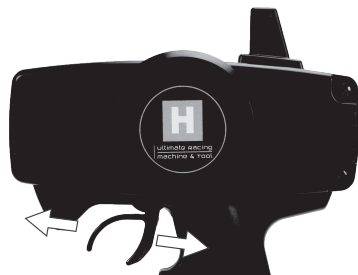
02

- Turn the steering wheel right to turn the front tires go right.
- Turn the steering wheel left to turn the front tires go left.



03

- Press the throttle trigger to moving forward the vehicle
- Push forward the throttle trigger to brake and reverse the vehicle.



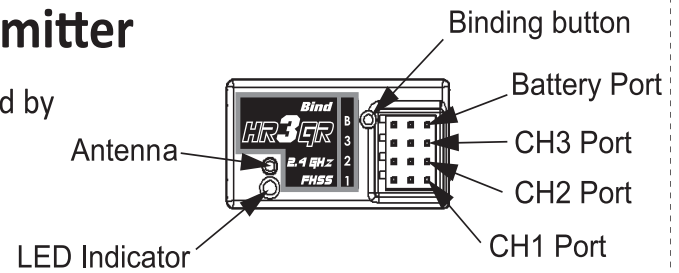
3 Binding (connecting the receiver to transmitter)

Binding the Receiver to the Transmitter

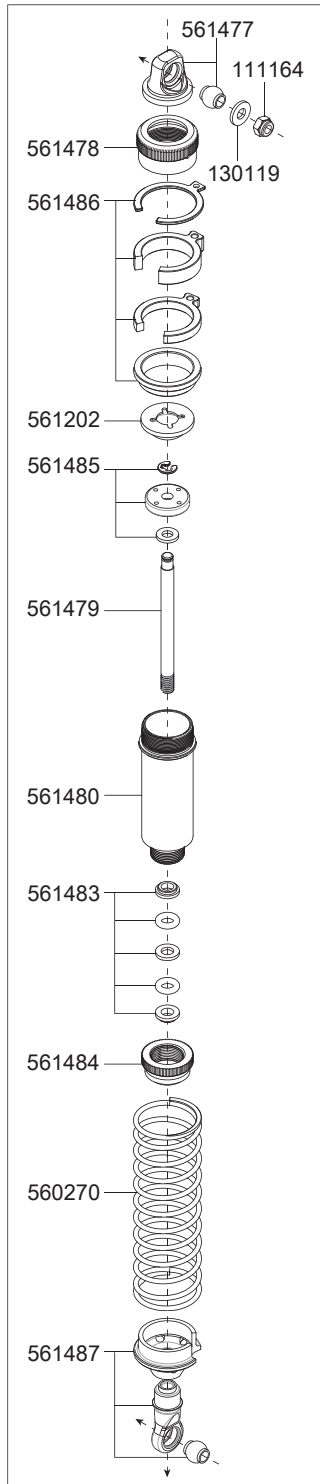
"Binding" is tuning the receiver to the frequencies used by the transmitter. Bind the receiver to the transmitter

as follows:

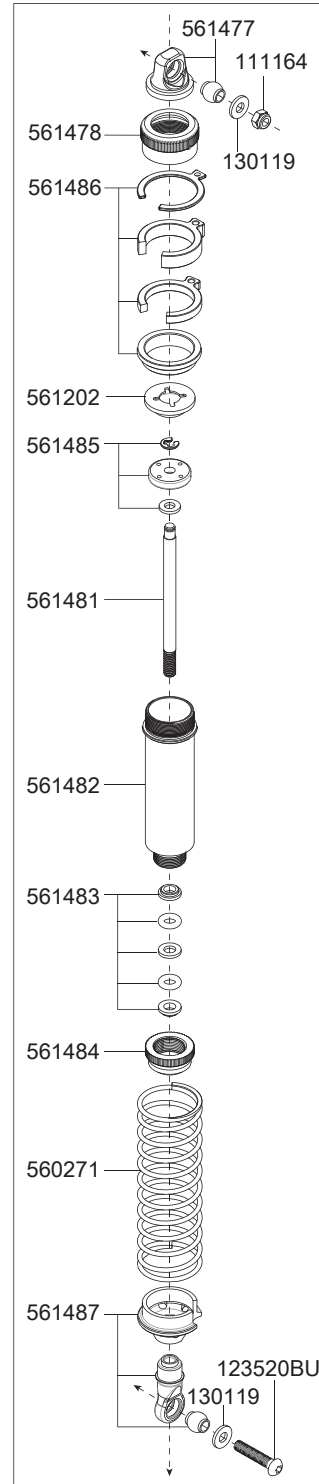
1. With both transmitter and receiver turned off, place the units no more than 30 cm (1 ft) apart.
2. While holding down the receiver's BIND button, apply power to the receiver. Its LED will start to flash steadily, indicating that the unit is in binding mode, a state that lasts up to 30 seconds.
3. Turn the transmitter on. It will immediately go into binding mode, a state that lasts one second.
4. When the receiver's LED shines steadily, binding is complete.



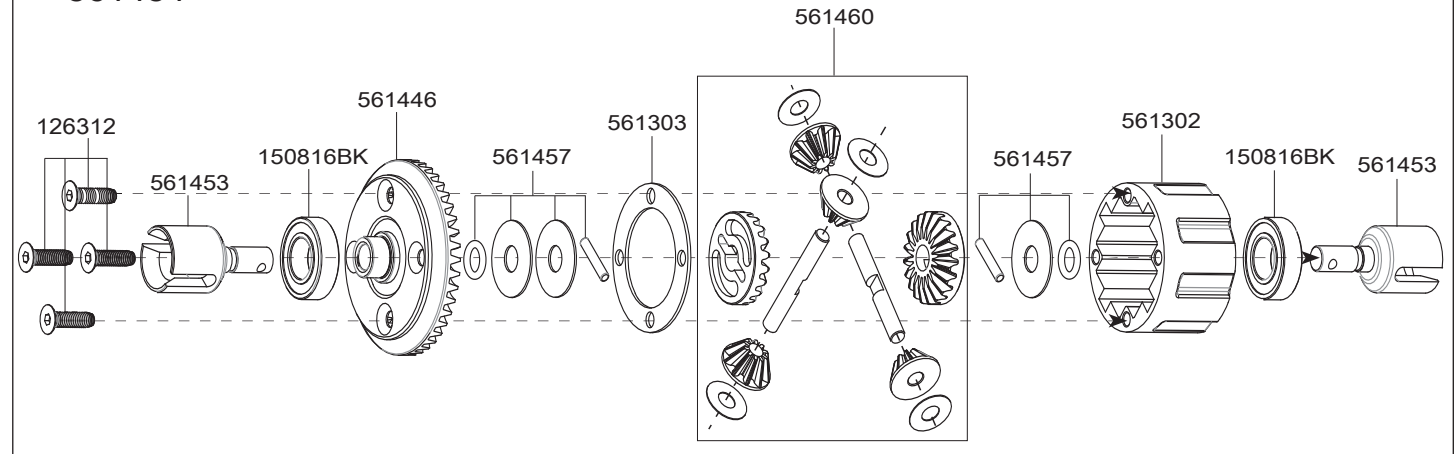
Front 561463



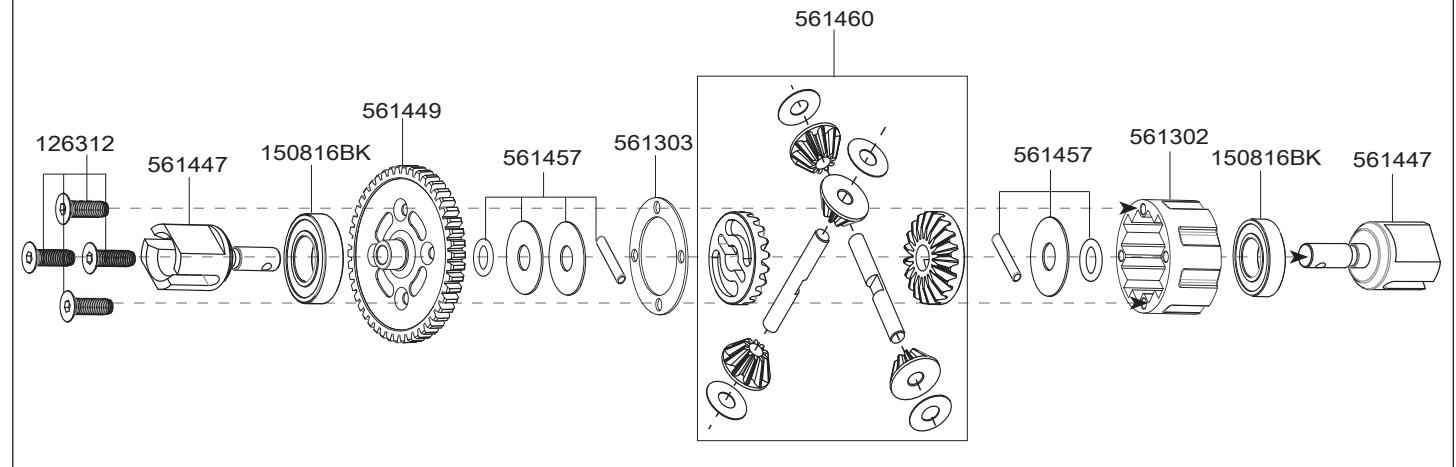
Rear 561464

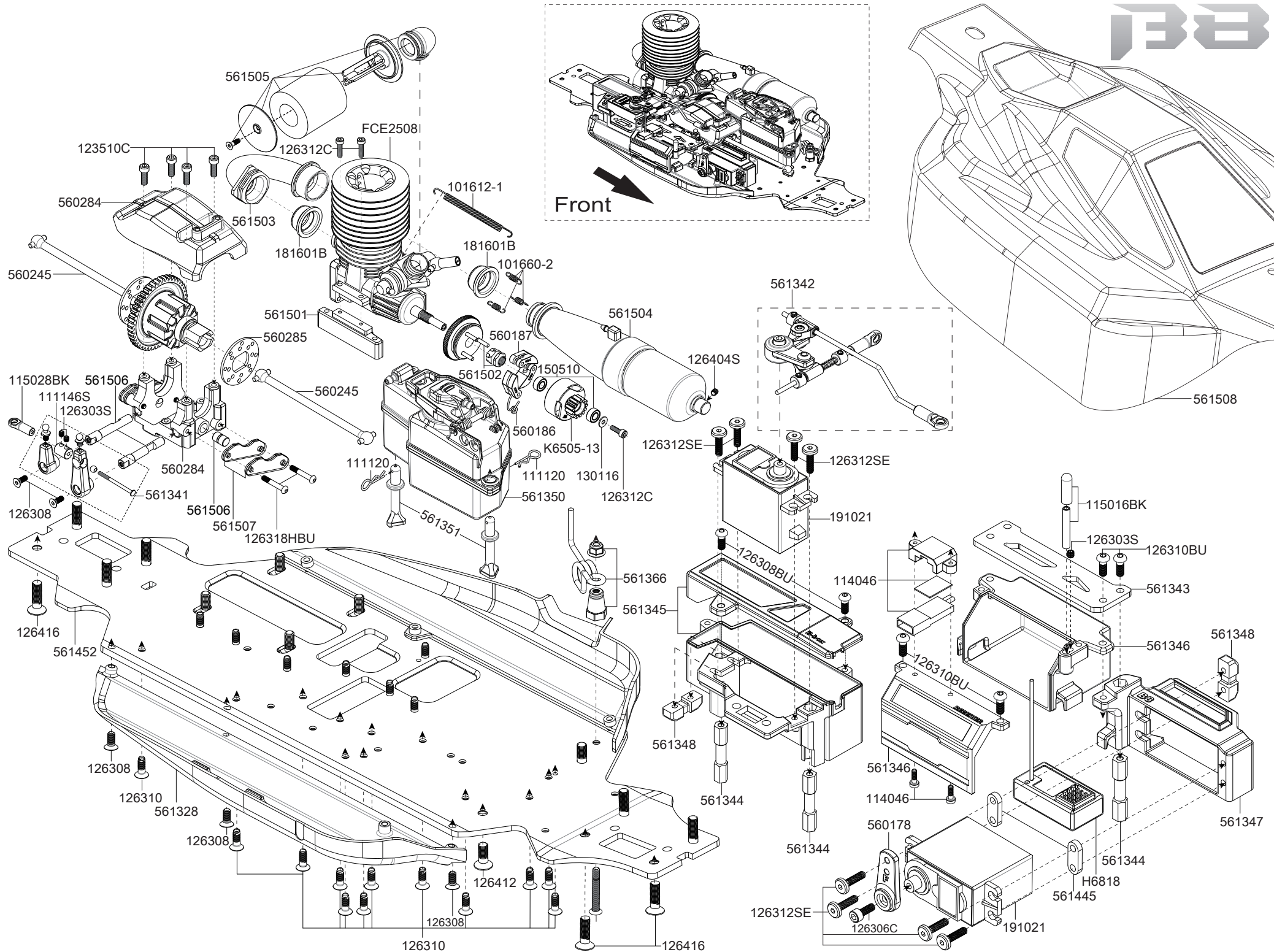


Front / Rear
561454



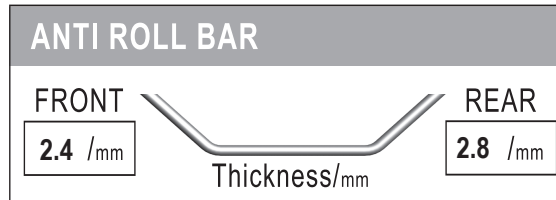
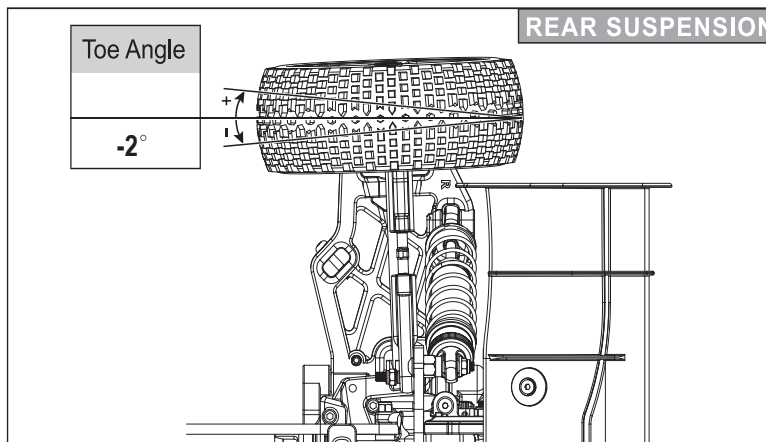
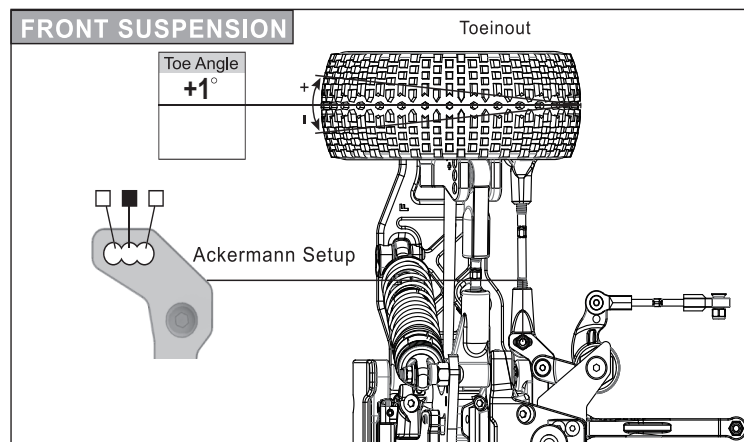
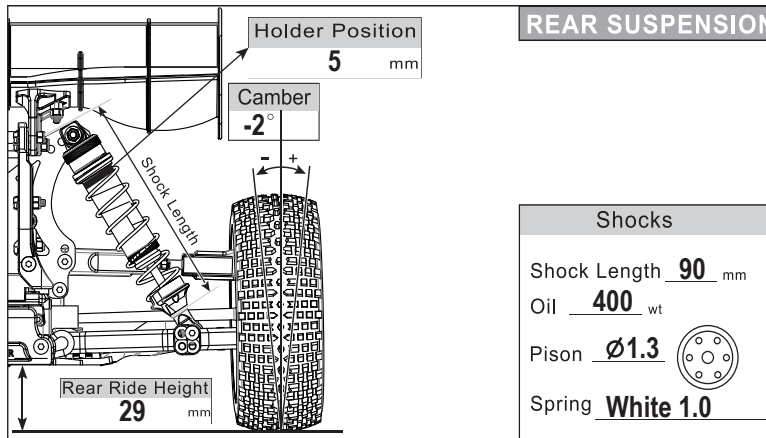
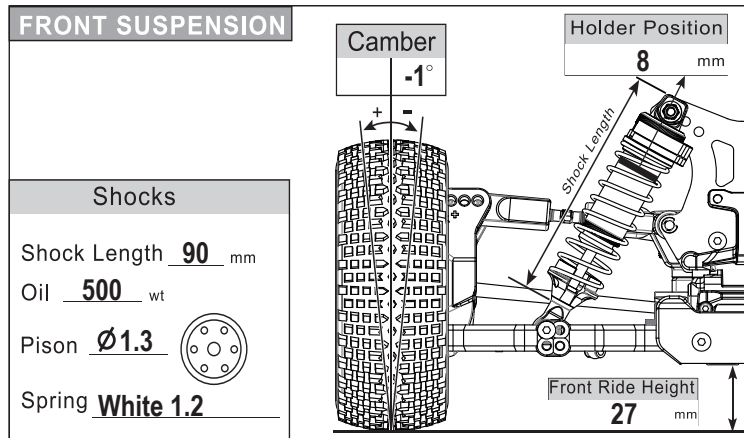
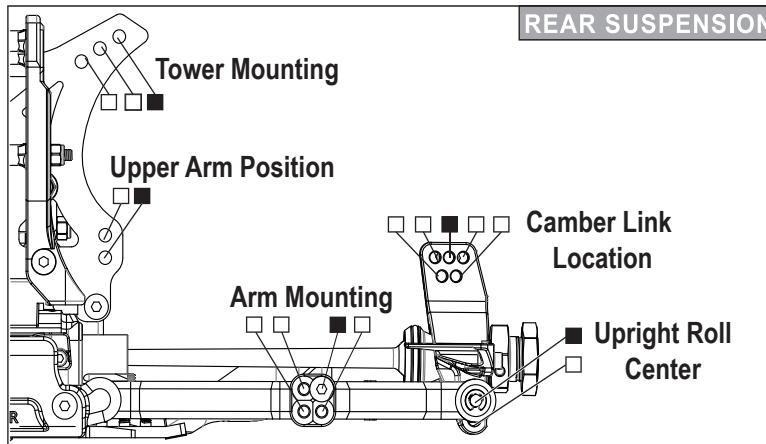
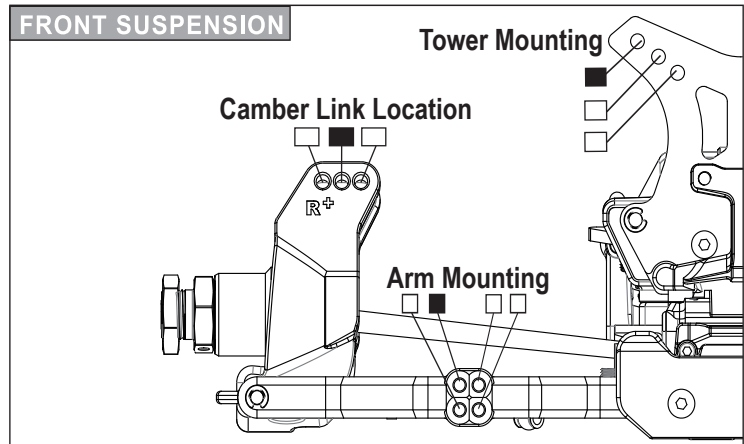
561459





Date: _____ Driver: _____
 Event: _____ Car: _____
 Track: _____ Weight: _____

STANDARD SETUP SHEET



DIFF OIL

Front	5000	wt	Other	_____
Center	7000	wt	Other	_____
Rear	10000	wt	Other	_____

TIRE

Front	Standard	Type	Rear	Standard
	Sponge	Inserts		Sponge
		Wheels		

ENGINE

Engine	.25 4 Port
Clutch	13T
Spur Gear	46T

COMMENTS

Race Time / Lap: _____
 Best Lap Time: _____
 Position: _____
 Notes: _____

ITEM NO.	ITEM DESCRIPTION				
		126320C	3x20mm Cap Screw (6)	561323	Servo Saver Post (2)
101612-1	Manifold Spring (Long, for 21 class) (2)	126326-5	3.5x26mm Steel FH Screw (6)	561325	Steering Rod Nylon Ball & Ball End Set
101660-2	Header & Pipe Retaining Spring 16.5mm (3)	126330C	3x30mm Cap Screw (6)	561328	Chassis Side Guard (1 pair)
111007ST	3mm Steel Locknut (10)	126335C	3x35mm Cap Screw (6)	561330	Wing Mount & Holding Set
111120	R6 R-clip (10)	126404S	4x4mm Set Screw (6)	561335	Rear Upper Arm(2)
111146S	TM Dual Alum. Stopper (6) Silver	126410C	4x10mm Steel Cap Screw(6)	561336	Rear Hub Carrier & Mud Sweeper (1 pair)
111147F	3.5mm Steel Flat Nut (6)	126412	4x12mm Steel F.H. Screw (6)	561341	Brake Lever Set
111164	3.5mm Lock Nut (10)	126412EN	4mm Steel Flat Round Engine Mount Screw (6)	561342	Throttle Servo Linkage Set
111166	R8 Angled Body Clip (10)	126412S	4x12mm Set Screw (6)	561343	Carbon Radio Plate
114046	Special 24cm Receiver Battery Pack Wire Set (w/mount)	126416	4x16mm Steel FH Screw (6)	561344	Aluminum Radio Plate Support (3)
115016BK	Antenna Rod (2) BLACK	126505S	M5x5mm Set Screw(6)	561345	Receiver Battery Pack Box
115027BK	Ball End & 5.8mm Single Flanged Steel Ball (6) Black	130102	8.1x12x0.2mm Shim (10)	561346	Receiver Box
115028BK	Throttle/Brake Ball Cup (4)	130107	13.2x15.9x0.5mm Shim (6)	561347	Steering Servo Mount
116135C	3x50mm CR Adjustable Rod (2)	130108	6.05x9.5x0.5 mm Shim(10)	561348	Servo Mount(4)
116154BK	5x40mm Hardened Adjustable Rod -BK (2)	130116	3.2x8x0.7 Washer (10)	561350	Fuel Tank
116202	E-clip 2.5 (10)	130119	3.6x8x1mm Washer (10)	561351	Fuel Tank Post (2)
116229	2.5x16.8mm PIN(10)	150510	5x10x4mm Dust-Resistant Bearing (4)	561353BK	Rear Wing-Black
123510	3.5x10mm Steel FH Screw (6)	150816BK	8x16x5mm Bearing-Black	561366	Pipe Holder
123510C	3.5x10mm Steel Cap Screw (6)	181601B	21 Class Manifold Seal (Rear Exhaust) (2) BLUE	561417	Front Body Post Set
123513BU	3.5x13mm Steel Button Head Screw (6)	191021	S1601 Servo 16KG	561440	Triangle Plate (Front)
123514	3.5x14mm Steel FH Screw (6)	560117	Front Anti-Roll Bar 2.4mm	561441	Front Stiffener
123516BU	3.5x16mm Steel BH Screw (6)	560130	ST Steel 4x68.8mm Hinge Pin (2)	561442	Front Upper Arm Mount
123518	3.5x18mm Steel FH Screw (6)	560149	Rear Anti-Roll Bar 2.8mm	561443	Front Shock Tower
123520BU	3.5x20mm Steel BH Screw (6)	560178	Servo Arm (Futaba) (2)	561444	Rear Shock Tower
123525BU	3.5x25mm Steel BH Screw (6)	560186	Clutch Spring 1.1mm (3)	561445	Servo Spacer (4)
126208BU	2.6x8mm Steel Button Head Screw (6)	560187	Clutch Shoe (3)	561446	Large Bevel Gear-43T
126208C-5	2.5x8mm Steel Cap Screw (6)	560243	Rear Body Mount	561447	Brake Cup(2)
126303S	3x3mm Set Screw (6)	560244	ST Steel Small Bevel Gear Outdrive (2)	561449	46T Main Gear
126306C	3x6mm Cap Screw (6)	560245	Hard Coated Alum. 7075 Center Drive Shaft (2)	561450	Small Bevel Gear-11T
126306S	3x6mm Set Screw (6)	560270	Front 18x66mm Shock Spring (2) White K=1.2	561452	Chassis
126308	3x8mm Steel F.H. Screw (6)	560271	Rear 18x86mm Shock Spring (2) White K=1.0	561453	Differential Cup(F/R)
126308BU	3x8mm Steel Button Head Screw (6)	560284	Center Differential Mount (1 set)	561454	Complete Differential Kit (F/R)
126310	3x10mm Steel F.H. Screw (6)	560285	Brake Disc (2)	561455	Front Lower Arm Mount
126310BU	3x10mm Button Head Screw (6)	560298	Steering Linkage Set	561456	Rear Stiffener
126312	3x12mm Steel F.H. Screw (6)	560511	Servo Saver Spring (1.5mm) Blue	561457	Pin & Shim for Diff.
126312BU	3x12mm Button Head Screw (6)	561202	Shock Bladder (4)	561459	Middle Differential Set
126312C	3x12mm Cap Screw (6)	561302	Diff Case Set	561460	Differential Bevel Gear Set (for 1 diff)
126312SE	3x12mm Steel Flat Round Servo Mount Screw (6)	561303	Diff Case Gasket (4)	561462	Rear Lower Outer Hinge Pin (2)
126316BU	M3X16mm BH Screw(10)	561307	Front Shock Tower Stiffener	561463	Front Shock Set(2)
126318HBU	3X18mm Button Head Screw (Half Thread)(6)	561309	Front & Rear Diff Gear Box (1 set)	561464	Rear Shock Set(2)
		561321	Caster Block (1 pair)	561465	Rear Arm Mount
				561467	Front Lower Outer Hinge Pin(2)
				561468	Wheel Lock Nut (4)
				561469	Steering Block Carrier Bushing (4)
				561471	Front Upper Inner Hinge Pin(2)
				561475	3x7x3mm Steel Bushing(4)
				561476	6x10x3mm Steel Bushing(4)
				561477	Shock Upper Joint (2)
				561478	Shock Upper Cap (2)
				561479	Front Shock Shaft(2)
				561480	Front Shock Body(2)
				561481	Rear Shock Shaft(2)
				561482	Rear Shock Body(2)
				561483	Shock O-Ring & Washer (2)
				561484	Shock Lower Cap (2)
				561485	Shock Piston (2)
				561486	Spring Spacer (4)
				561487	Shock lower Joint (2)
				561491	Shock Cap Bushing (4)
				561495BK	B8 Pre-mounted Tires (2)-6 Spokes Black
				561501	Engine Mount (L+R)
				561502	Clutch Flywheel & Clutch Nut
				561503	1/8 Buggy Exhaust Manifold
				561504	1/8 Buggy Exhaust Pipe
				561505	B8JR Air Filter Set
				561506	Brake Cam Post & Cam (2pcs/each)
				561507	Brake Pad (2+2)
				561508	B8JR Body
				562022	Anti-Roll Bar Linkage Joints (2)
				562023	CVA Joints (2)
				562024	Front Lower Arm(2)
				562025	Steering Block (2)
				562028	Front Upper Arm Set (2)
				562029	Servo Saver Nylon Parts
				562030	Servo Saver Spring Holder
				562040	Rear Lower Arm(2)
				FCE2508	Nitro Engine .25
				H6817	HT3GDS 2.4G Transmitter w/Receiver
				H6818	HR3GR 3 Channel 2.4G Receiver
				K5114	K Factory Alum. 3.5mm Locknut (6)
				K6505-13	K Factory 1/8 Buggy Clutch Housing 13T



Team Magic Model Industrial co. Ltd.

No.185-2, 38th Road, Taichung industrial Park, Taichung, Taiwan 407

E-mail: service@teammagic.com.tw

Web: www.teammagic.com.tw

Facebook: TeamMagicModel

Tel: 886-4-23552606 Fax: 886-4-23552946

MADE IN TAIWAN



61010-1